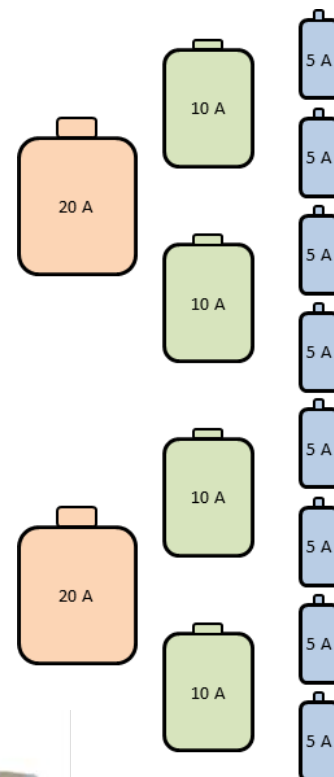


New!

585 BATTERY TEST SYSTEM

Advanced 8 Channel Battery Cycler

- ✓ Each channel is an independent potentiostat/galvanostat
- ✓ 6 current ranges from 50 μ A to 5 A
- ✓ Gang channels up to 20 A
- ✓ 6 terminal measurement
- ✓ Control modes: current, voltage, power
- ✓ HFR for internal resistance
- ✓ 100 pts/sec sample rate
- ✓ **BCycle**TM & **BView**TM software – user-friendly, powerful, flexible



APPLICATIONS:

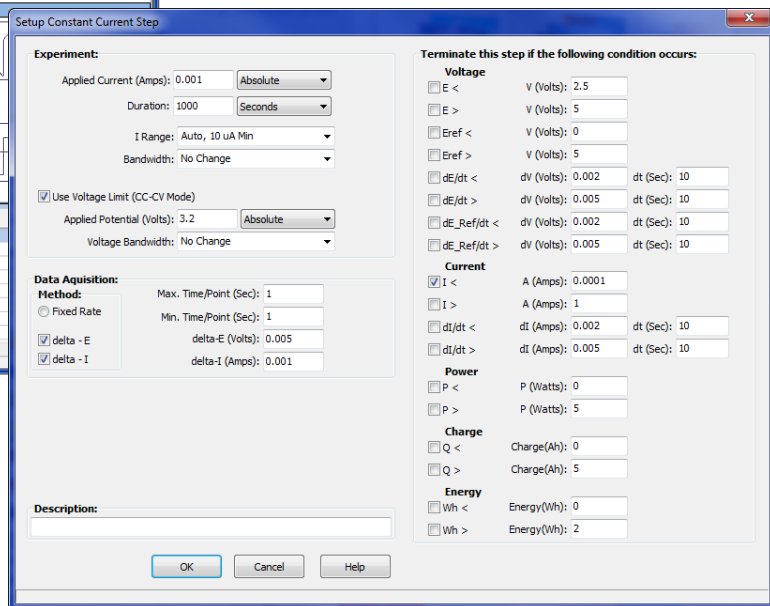
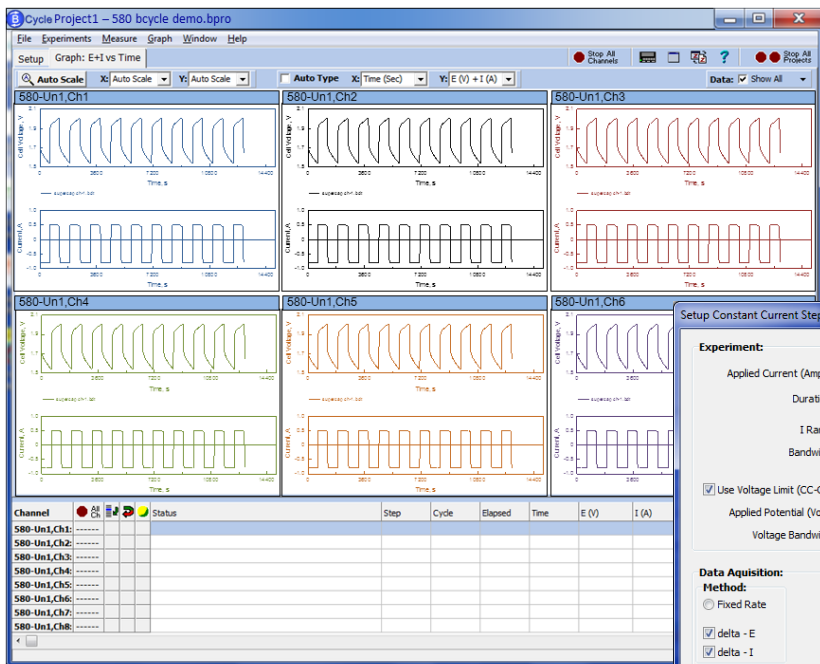
- Battery testing
- Supercapacitors

OPTIONS:

- Universal cell holder
- Standard or custom cables

SPECIFICATIONS:

Set Voltage:	-4 V to +6 V
Compliance Voltage:	-4 V to +6 V
Maximum Current:	±5 A (8 channels); ±10 A (4 channels); ±20 A (2 channels)
Current Ranges:	5 A, 500 mA, 50 mA, 5 mA, 500 µA, 50 µA (Auto)
Mode:	Constant Current, Voltage or Power (charge, discharge)
Control Accuracy:	
Voltage:	±0.1% of Positive Full Scale (at 25 °C)
Current:	±0.2% of Full Scale of Range (at 25 °C)
Measurement Accuracy:	
Voltage:	±0.05% of Positive Full Scale (at 25 °C)
Current:	±0.2% of Full Scale of Range (at 25 °C)
Overload Tolerance:	
Current:	110% of rating
Voltage:	110% of rating
Connection:	2, 3, 4, 5 or 6-wire (I+, I-, V+, V-, AUX+, AUX-)
Sampling Rate:	Max. 100 Sample/s per channel (with one 585-unit per computer)
Impedance:	2 frequency HFR; user-defined frequencies (1 Hz to 1 kHz)
Host Interface:	USB, full-speed
Channels:	8, independent, not electrically isolated from each other or USB interface
Dimensions:	43 cm W x 22.5 cm H x 54 cm D (17 in. x 8.8 in. x 21.3 in.)
Weight:	20 kg (42 lbs.)
Environment:	5-35 °C
Power:	100-240 V, 50/60 Hz



BCycle, BView and icons  and  are trademarks of Scribner Associates, Inc.